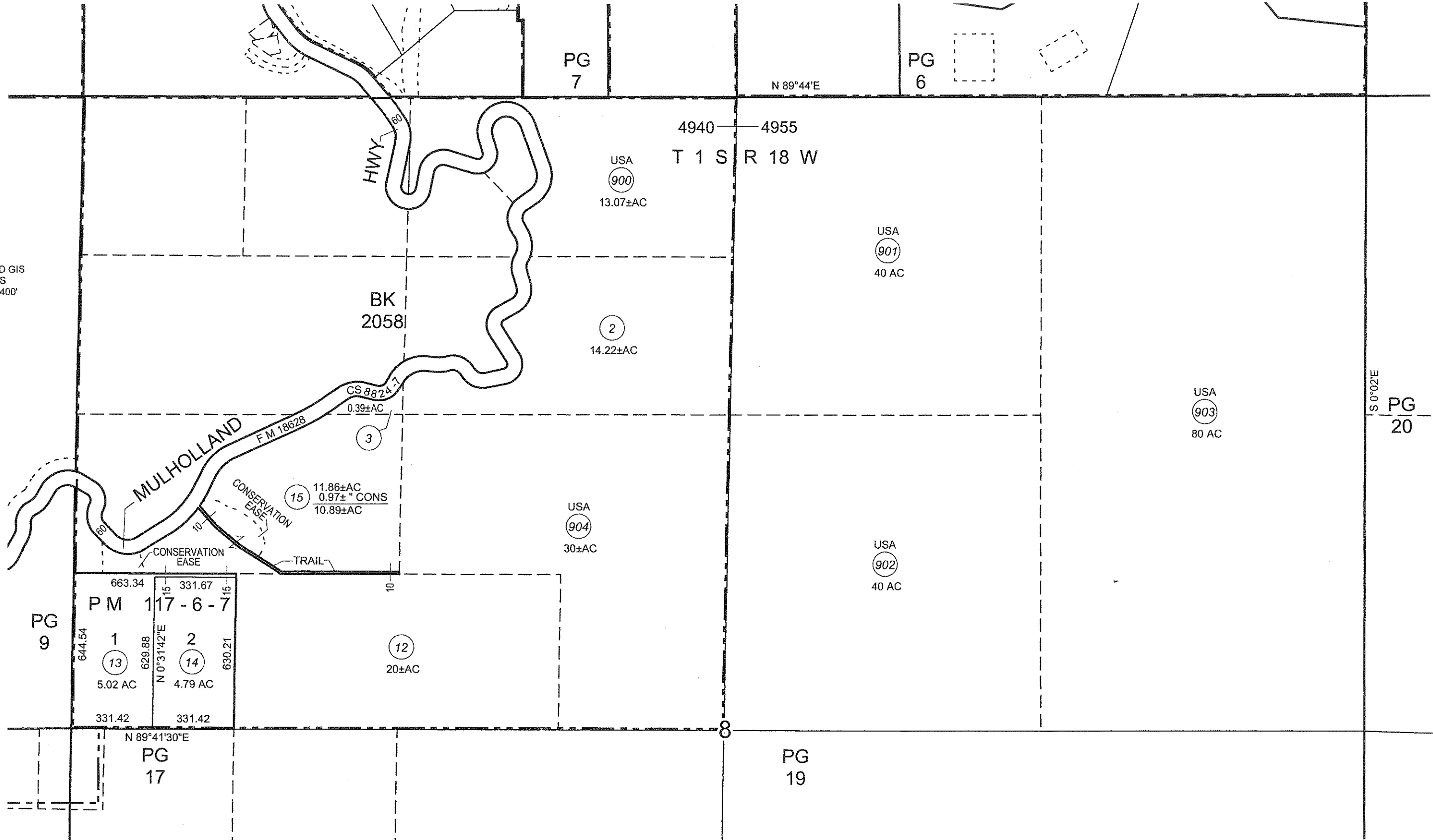


2011



MAPPING AND GIS SERVICES SCALE 1" = 400'



PG 7

PG 6

N 89°44'E

4940 — 4955
T 1 S R 18 W

USA
900
13.07±AC

USA
901
40 AC

2
14.22±AC

BK 2058

3
0.39±AC

USA
903
80 AC

USA
904
30±AC

USA
902
40 AC

15
11.86±AC
0.97± " CONS
10.89±AC

12
20±AC

663.34	15	331.67	15
PM 117-6-7			
644.54	1	2	630.21
629.88	13	14	
	5.02 AC	4.79 AC	
	N 0°31'42"E		
331.42		331.42	

PG 9

N 89°41'30"E

PG 17

PG 19

S 0°02'E

PG 20